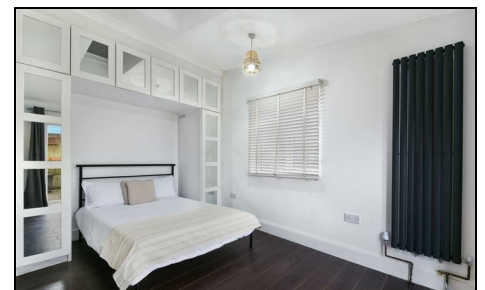


**Mount Road
Mitcham, CR4 3EY**

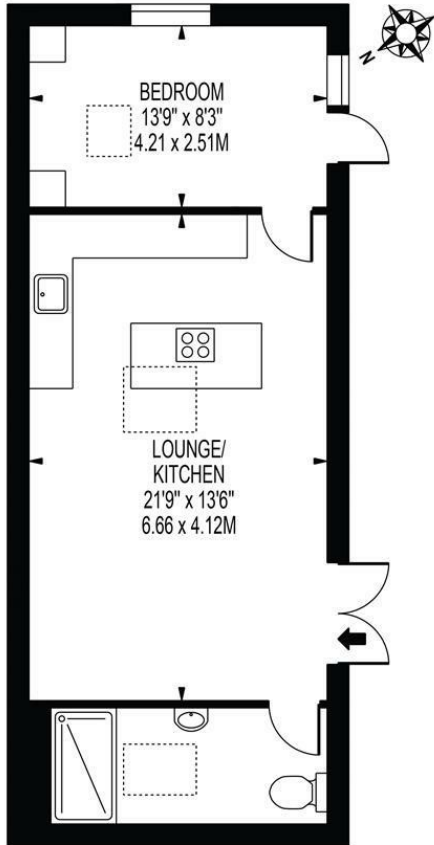
£350,000 Freehold



A beautifully presented one bedroom detached bungalow located on a quiet residential road in the borders of Colliers Wood within easy reach of Colliers Wood Tube Station (Northern line). Comprising of an open plan living space with modern fitted kitchen with direct access to the spacious south facing rear garden. Double bedroom with fitted wardrobes and a contemporary modern fitted bathroom. One bedroom bungalows are very rare to the market so we urge you to book viewings early to avoid disappointment.

MOUNT ROAD

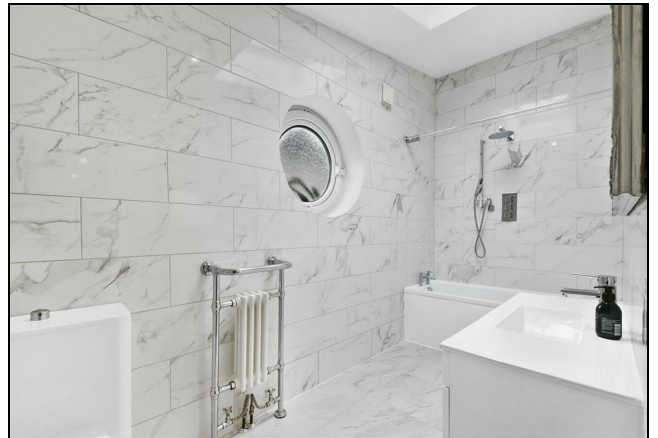
APPROXIMATE GROSS INTERNAL FLOOR AREA: 480 SQ FT - 44.59 SQ M



GROUND FLOOR

FOR ILLUSTRATION PURPOSES ONLY

THIS FLOOR PLAN SHOULD BE USED AS A GENERAL OUTLINE FOR GUIDANCE ONLY AND DOES NOT CONSTITUTE IN WHOLE OR IN PART AN OFFER OR CONTRACT. ANY INTENDING PURCHASER OR LESSEE SHOULD SATISFY THEMSELVES BY INSPECTION, SEARCHES, ENQUIRIES AND FULL SURVEY AS TO THE CORRECTNESS OF EACH STATEMENT. ANY AREAS, MEASUREMENTS OR DISTANCES QUOTED ARE APPROXIMATE AND SHOULD NOT BE USED TO VALUE A PROPERTY OR BE THE BASIS OF ANY SALE OR LET.



- Bungalow
- One Double Bedroom
- Beautifully Presented
- Private Garden
- Open Plan Living
- Ideal First Purchase
- EPC Rating : C
- Merton Council Tax Band : A

Energy Efficiency Rating

	Current	Potential
<i>Very energy efficient - lower running costs</i>		
(92 plus) A		87
(81-91) B		
(69-80) C	70	
(55-68) D		
(39-54) E		
(21-38) F		
(1-20) G		
<i>Not energy efficient - higher running costs</i>		
England & Wales		EU Directive 2002/91/EC

For Free Mortgage Quote and Best Mortgage Rates, call an Ellisons Mortgage Advisor on 020 8544 0518



Although these particulars are believed to be correct, their accuracy is not guaranteed and they do not form part of any contract.

Celebrating 30 years of successful Sales and Lettings in Merton

